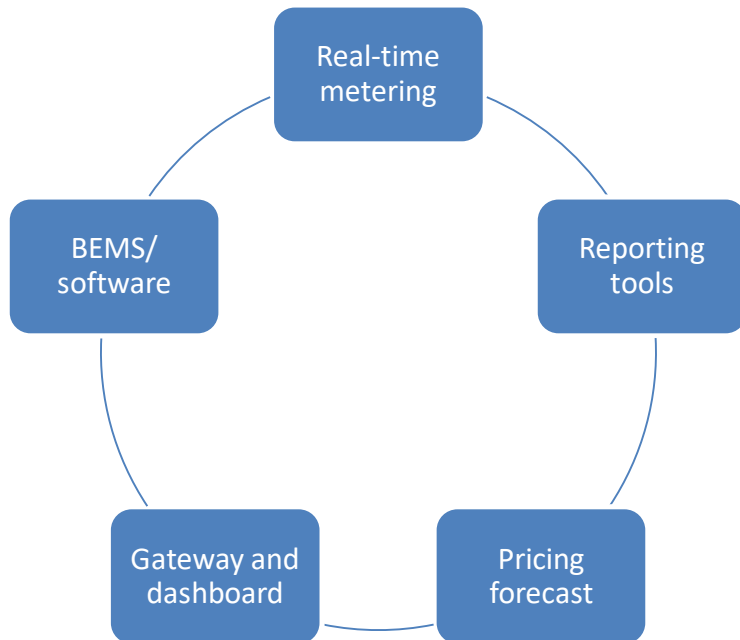


# Definition Demand Response 1 (DR1)



- Existed for the last 15 years
- The aim is to reduce/shave/curtail the demand peaks
- Most end-users respond manually but some also automated
- Most end-users typically reduce the load 5 – 10 days a year
- Most end-users will be told 24 hours in advance
- DR1 sites are not necessarily linked to energy efficiency
- Some end-users provide emergency DR e.g. shorter notice and shorter intervals, mostly automated

# Definition Demand Response 2 (DR2)



- DR2 is more interactive
- Client energy profile
- The energy consumption will be monitored and system faults identified
- Usage data will be available every 5 – 30 minutes
- Many different software packages are available to be linked to the client's BMS
- DR2 is mostly automated
- There are different levels of DR2. More advanced DR2 would include buying and selling electricity

# Examples of Complex Rates

- Time of use (TOU) rates
- Demand rates
- Dynamic or peak-sensitive rates

